

Global Corporate & Commercial

# Global Construction

We speak your language



# What's keeping you awake at night?

## It's a question we ask our clients every day...

Construction is a sophisticated, dynamic business with numerous risks. And while some risks are evident, others are unpredictable. Just to name a few:

New technologies are constantly emerging, bringing new hazards along. Political instability and economic uncertainty bleed traditional sources of capital dry and transform access to funding. Environmental concerns loom large for everyone, from clients to the general population. Rising inflation and supply chain disruptions make it hard to forecast future expenses. Do you know what today's project will cost you ten or twenty years down the road? With governments around the world announcing substantial investment plans in infrastructure, the construction industry is positioning itself as the engine of economic recovery and sustainable development of our societies.

To be a true global leader and fully capitalise on the opportunities arising in this environment, you need an insurance partner that will be there if things go wrong. Generali will follow your business wherever you expand, providing bespoke coverage for local and international risks.

At Generali, your challenges are our business.



Business continuity



Low investments



Emerging risks



Climate change



Contingent project liabilities



Globalization



Economic uncertainty



Extreme weather



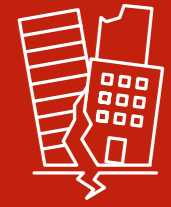
Exchange rates



New technologies



Geopolitical change



Natural catastrophes

That's where Global Construction comes in. We're fluent in the language of construction, and we'll partner with your company, using our global experience, local knowledge and sector insights to promote your interests.

**You work in a fast-paced,  
high-risk world.**

**Generali can help.**



Environmental concerns

**We speak your language.**

We don't just insure, we reassure. Our global reputation is built on solid insurance expertise, backed by sound advice, ongoing support and a human touch.



**HELPING** your  
business **succeed**

We'll handle the worries, you handle the worksite. Our global reputation is built on solid insurance expertise, backed by sound advice, ongoing support and a human touch. We'll work side-by-side with you so that we can provide prompt, appropriate service on a case-by-case basis.

You can depend on us to help you navigate international tenders, ensuring business continuity by protecting your assets and workforce on the ground. Need to manage project funding, sidestep potential fines or navigate local bureaucracy? We'll put local experts and international specialists on the case, making sure your business keeps running smoothly.

We know that a major claim can have a significant impact on a given project, or even on your whole business. That's why our experts can help reduce your claim exposure and ensure your business keeps running, even in the event of a loss.

**ADDING VALUE**  
beyond **the policy**

Ultimately, it's all about service. You can rely on us for coverage during different project phases, from financing and construction to operational management. Our dedicated teams are trained to provide the kind of precise, practical insurance solutions you need.

Our dedicated teams of loss control engineers, professional underwriters and claims handlers are experts in identifying your specific risks and developing solutions that can help you minimize their impact or even avoid them altogether.

**AGILE, FLEXIBLE**  
and **ADAPTABLE**

We'll customize our insurance program to fit your specific situation. For us, it's all about flexing to fit the customer's individual needs. This flexibility allows us to react more quickly, whether you need a document issued immediately or special coverage for specific client standards in a foreign country.

Our underwriters are independent and empowered, capable of making on-the-spot decisions and providing quick responses no matter how complex the issue is.

Our goal is to resolve claims quickly, helping you complete your project on time and within budget.

# Insurance tailored to your needs

**BUILD A LONG-LASTING RELATIONSHIP WITH A LOYAL,  
EXPERIENCED INSURER**

Global Construction is a worldwide network of dedicated insurance professionals who can vaunt extensive experience in the construction industry. We offer flexible services with innovative, technically agile and efficient solutions. Among others, the new contractual realities of "design-build-operate" require the kind of precise, practical insurance solutions that only a dedicated team can provide. As contractors increasingly operate globally, there's demand for complete and specialized solutions, including, for instance, our multinational programs.

That's our specialty. We have been insuring some of the biggest and most complex engineering projects around the world including tunnels, bridges, dams, harbors, railways, metro railways, freeways and more.

We not only value long-term relationships with our customers, but honest feedback as well. Through our risk engineering services we invite our intermediaries and customers to meet with our specialists and evaluate potential concerns together to make sure we're offering you the most appropriate insurance solutions for your business.

Our mission is not just insurance: we aim higher. We partner with our customers, providing and assisting you in your risk management needs. Everything we do is designed to safeguard your company and add value to our business relationship.

Our dedicated team will be there for you whenever you need them. We not only value long-term relationships with our customers, but honest feedback as well. Through our risk engineering services we invite our intermediaries and customers to meet with our specialists and evaluate potential concerns together in order to make sure we're offering you the most appropriate insurance solutions for your business.



## WE'LL FLEX TO FIT YOUR NEEDS, BEING THERE FOR YOU WHEN IT REALLY MATTERS




Our customers require more than standard insurance coverage. A “full cycle” customer has different insurance needs at different stages of the project, ranging from construction to operational management and more. We flex to fit, providing:

**Focus:** dedicated team of construction industry experts

**Service:** flexibility and bespoke solutions, dedicated claims and risk engineering management, Multinational Programs



**Reach:** a truly global network and local presence all over the world

Financial strength: Generali is one of the world's 100 largest companies (Fortune Global 500)



You'll find we offer custom-tailored services to every client in our portfolio, large or small, including a claims protocol and service level agreements, where necessary. We also provide dedicated experts and lawyers who are leaders in their fields when required.

We maintain close working relationships with specialized partner companies who can assist in disaster recovery and claims mitigation, and our dedicated Crisis Management Service will help you prepare for any potential critical event.



# Get in touch with us today!

## Client & Distribution



scan the qr code or [click here](#)

## Global Construction



scan the qr code or [click here](#)

 [www.generaliglobalcorporate.com](http://www.generaliglobalcorporate.com)

 Connect with us on LinkedIn!

Generali Global Corporate & Commercial is part of Generali Group

